



Pam Ball  
unlimited

Print the May monthly pack and use it to teach the children a variety of concepts.

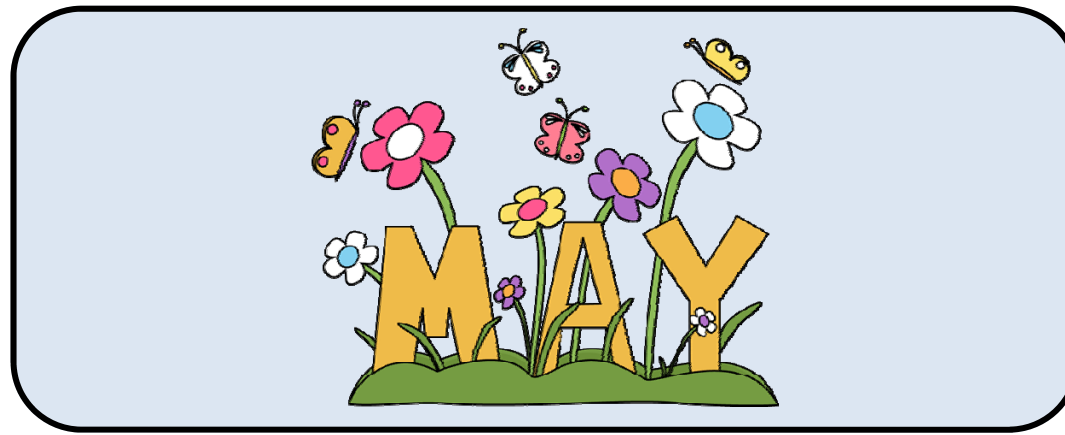
1. May Calendar Pieces
2. May Daily Notes
3. May Newsletter
4. May Menus
5. May Children's Calendar
6. May Sign In/ Sign Out Sheet
7. May Teacher/Provider Calendar
8. May Lesson Plan
9. May Concepts Puzzle
10. May Cut-n-Paste
11. May Word Wall
12. May Pre-Primer Word Cards
13. May Sequencing Cards
14. May See It, Say It, Spell It, Write It
15. May Math Mats



Pam Ball  
unlimited

Copyright © 2013-2016 Pam Ball Unlimited

Visit: [www.pamballunlimited.com](http://www.pamballunlimited.com) for more products!



Yesterday was...

Today is...

Tomorrow will be...

Sunday

Monday

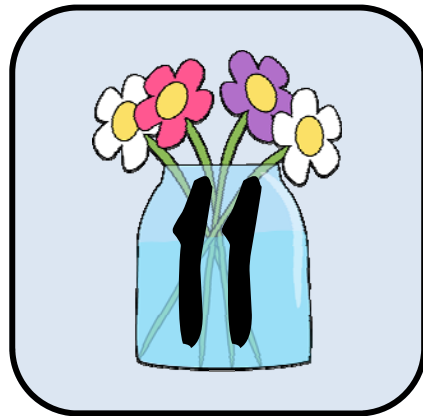
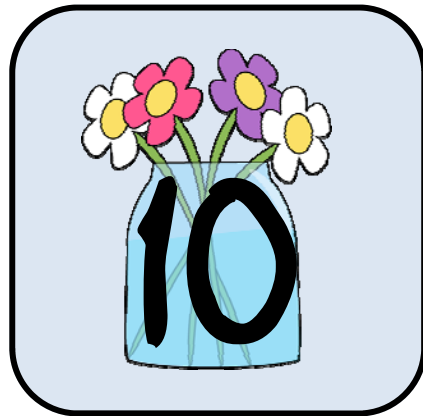
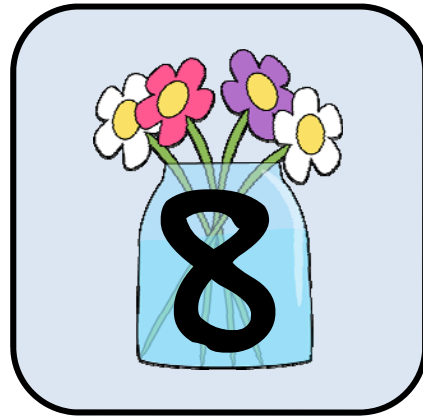
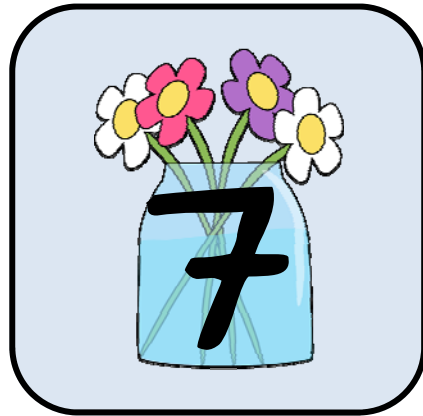
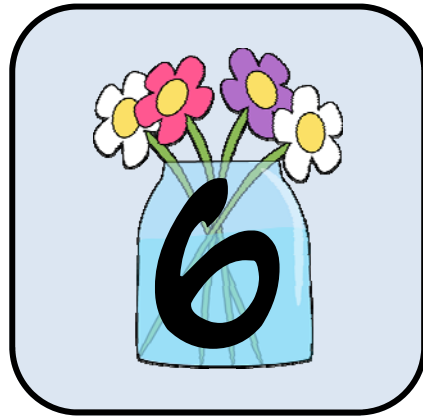
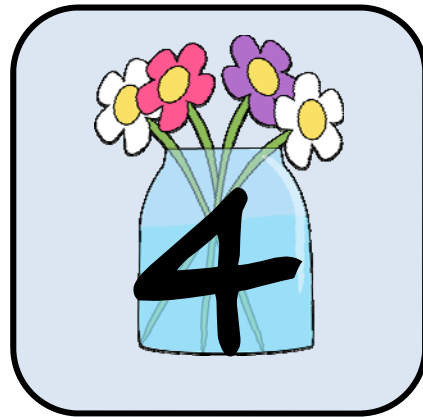
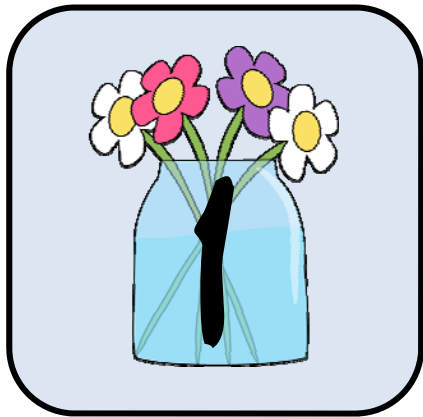
Tuesday

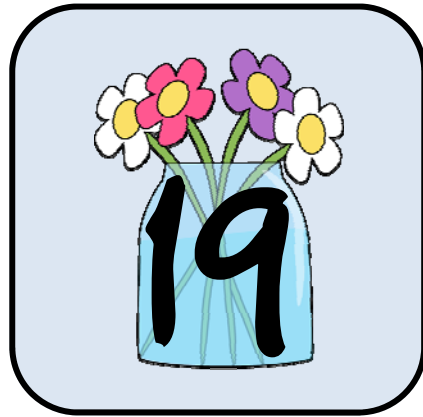
Wednesday

Thursday

Friday

Saturday



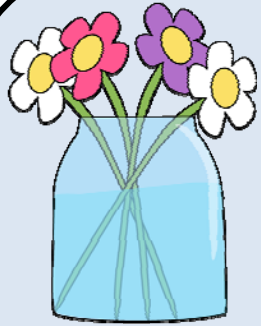






Canada





Child's Name: \_\_\_\_\_

Date: \_\_\_\_\_

LOOK what I did today!

I ate:

- All
- Some
- None

I napped:

- Good
- OK
- Not at all

Reminder/Memo:



Child's Name: \_\_\_\_\_

Date: \_\_\_\_\_

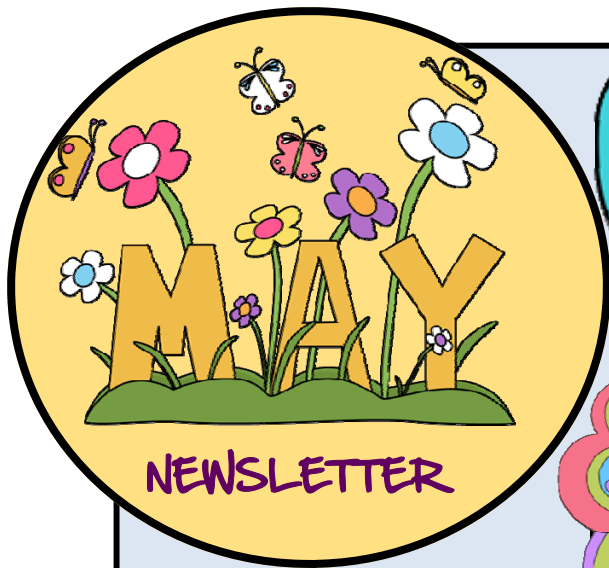
I ate:

- All
- Some
- None

I napped:

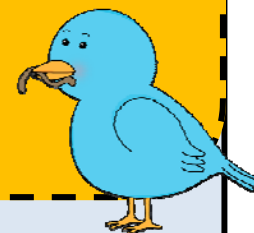
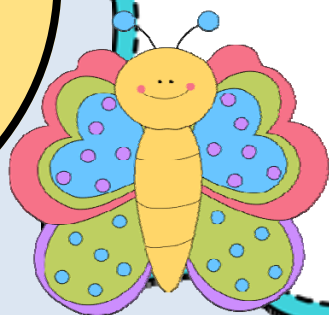
- Good
- OK
- Not at all

Reminder/Memo:

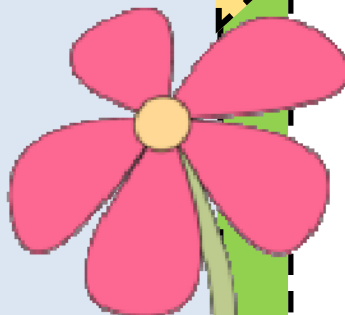
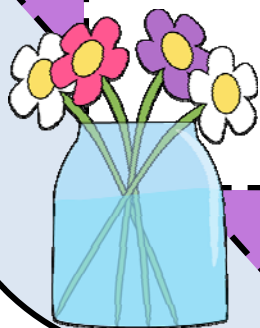


## Upcoming Events

## Learning Activities



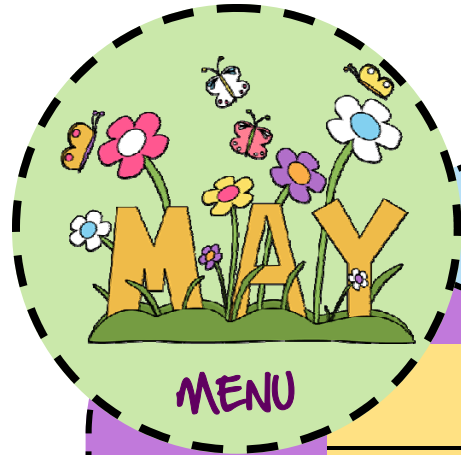
## Special Days



## May Reminders



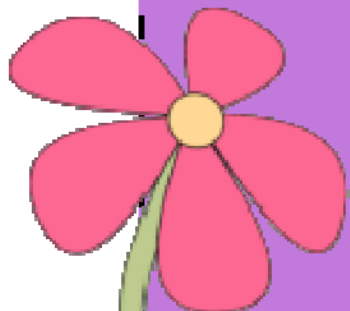


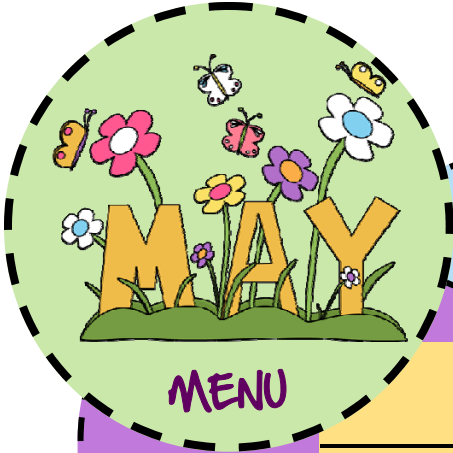


# Preschool Menu

Please refer to the USDA Meal Requirements Manual and Guidelines for serving sizes and credible foods.

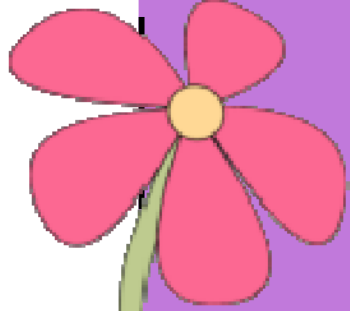
	Monday	Tuesday	Wednesday	Thursday	Friday
<b>Breakfast</b>					
Milk					
Fruit/Vegetable					
Bread/Cereal					
<b>AM Snack (Any 2)</b>					
Milk					
Meat or Alternative					
Fruit/Vegetable					
Bread/Cereal					
<b>Lunch</b>					
Milk					
Meat or Alternative					
Fruit/Vegetable (2)					
Bread/or Alternative					
<b>PM Snack (Any 2)</b>					
Milk					
Meat or Alternative					
Fruit/Vegetable					
Bread/or Alternative					





# Infant Menu

	Monday	Tuesday	Wednesday	Thursday	Friday
<b>Breakfast</b>					
Formula/Breast Milk					
Fruit/Vegetable					
Infant Cereal					
<b>AM Snack</b>					
Formula/Breast Milk					
Fruit/Vegetable					
<b>Lunch</b>					
Formula/Breast Milk					
Meat or Meat Alternative					
Fruit/Vegetable					
Infant Cereal					
<b>PM Snack</b>					
Formula/Breast Milk					
Fruit/Vegetable					



Please refer to the USDA Meal Requirements Manual and Guidelines for serving sizes and credible foods.



# Children's Calendar

Sunday	Monday	Tuesday	Wednesday	Thursday	Friday	Saturday
1	2	3	4	5	6	7
8	9	10	11	12	13	14
15	16	17	18	19	20	21
22	23	24	25	26	27	28
29	30	31				



# Sign In Sign Out Sheet

	Mon day		Tues day		Wednes day		Thurs day		Fri day	
Child's Name	IN	OUT	IN	OUT	IN	OUT	IN	OUT	IN	OUT



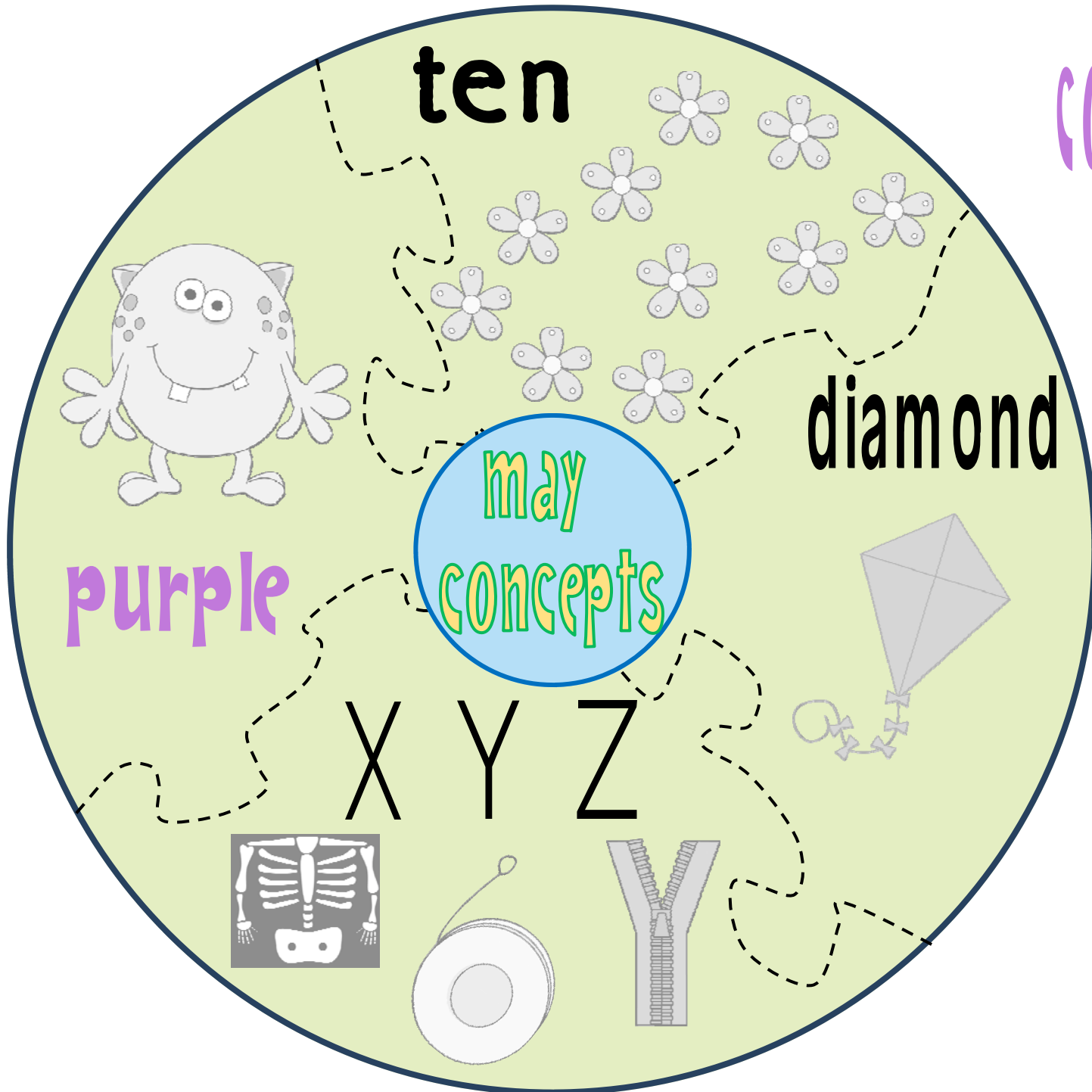
# Teacher/Provider Calendar

Sunday	Monday	Tuesday	Wednesday	Thursday	Friday	Saturday	Notes	
1	2	3	4	5	6	7		
8	9	10	11	12	13	14		
15	16	17	18	19	20	21		
22	23	24	25	26	27	28		
29	30	31						



# Lesson Plan

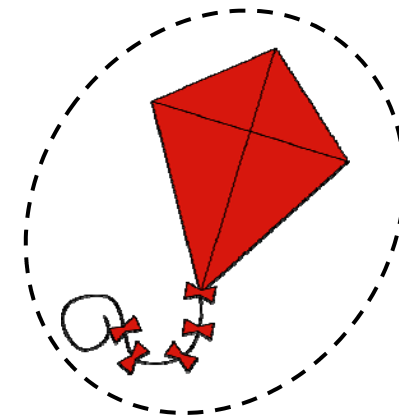
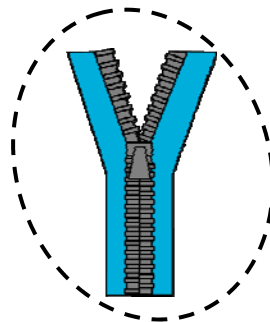
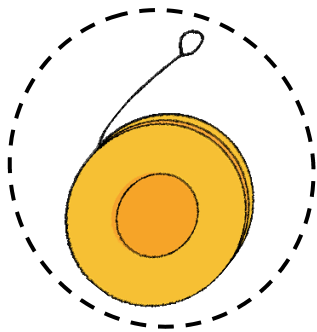
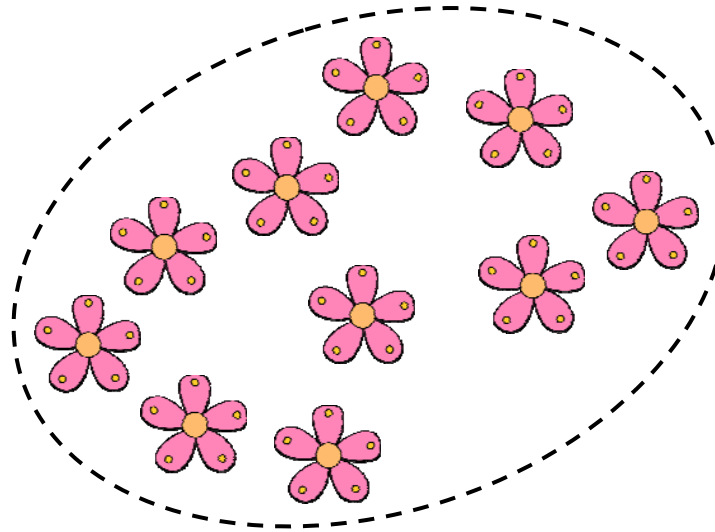
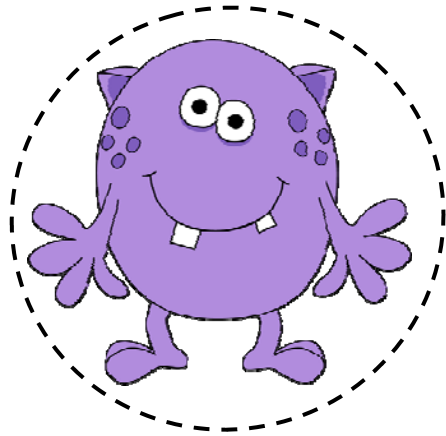
Circle Time	Morning Group	Music/Movement	Arts/Crafts	Notes	
Science/Sensory	Math/Manipulatives	Drama Play/Blocks	Literacy/Writing		Notes
Story Time	Outdoor Sun	Extras	Afternoon Group		



# concepts puzzle

Print the concepts puzzle, cut it out and laminate for durability.

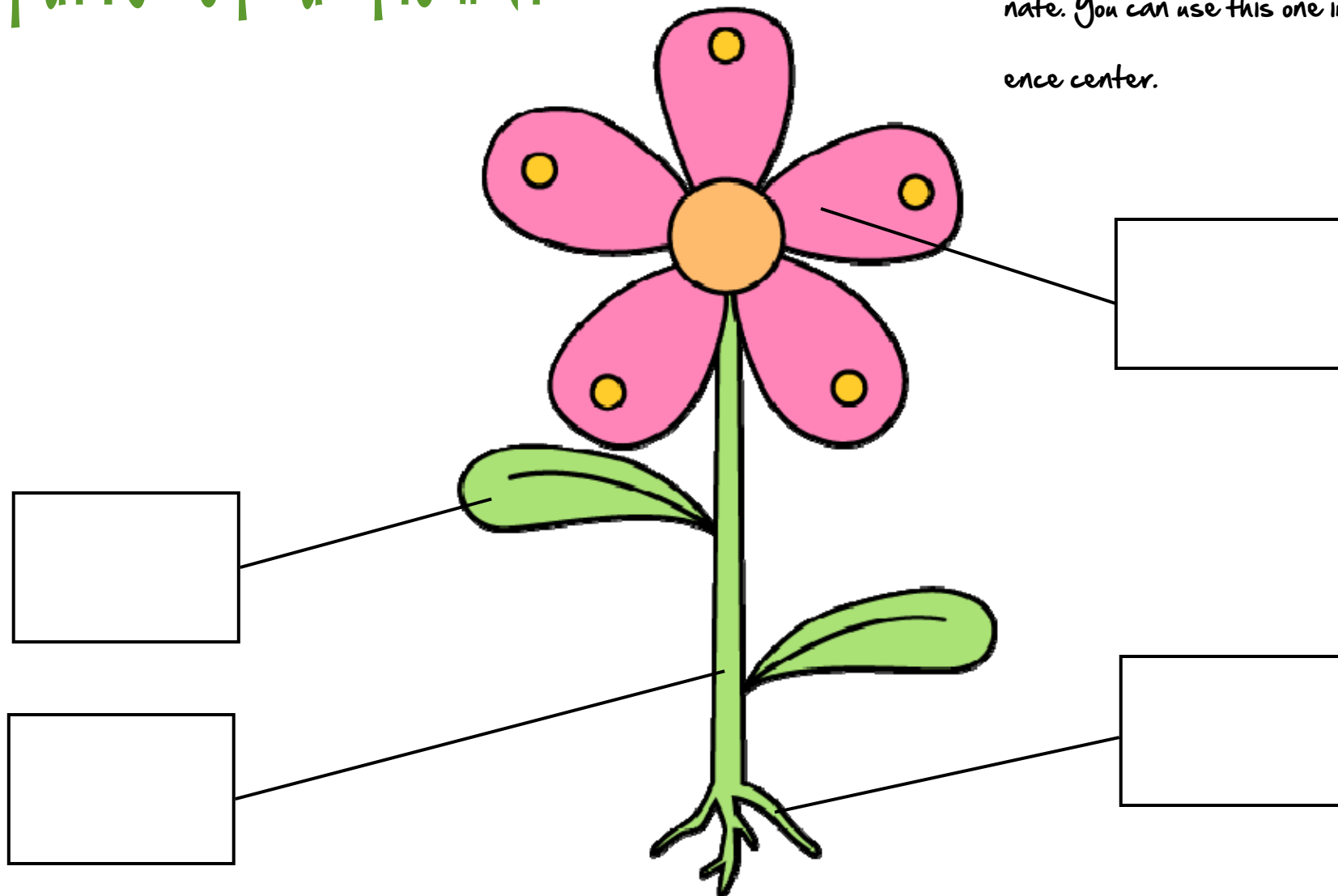
Place this in your manipulatives center for the children to complete. You may want to print more than one as it will become a favorite!





# parts of a flower

Cut out the labels on the bottom and laminate. You can use this one in your science center.



petal

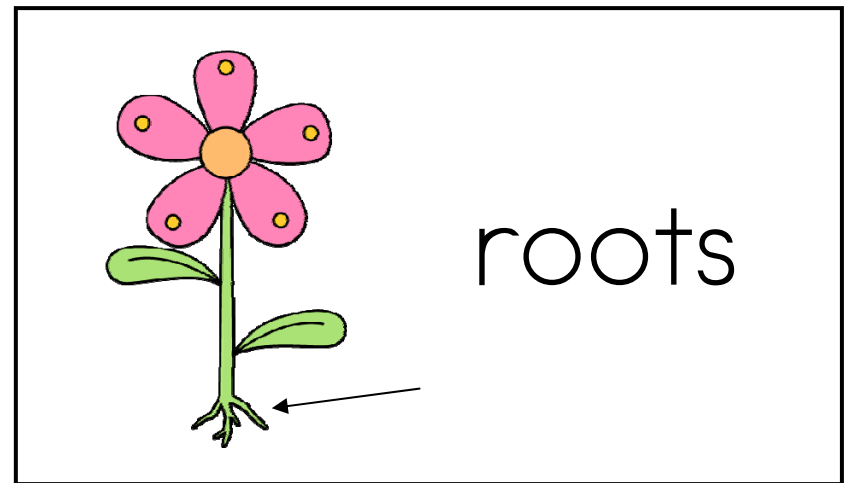
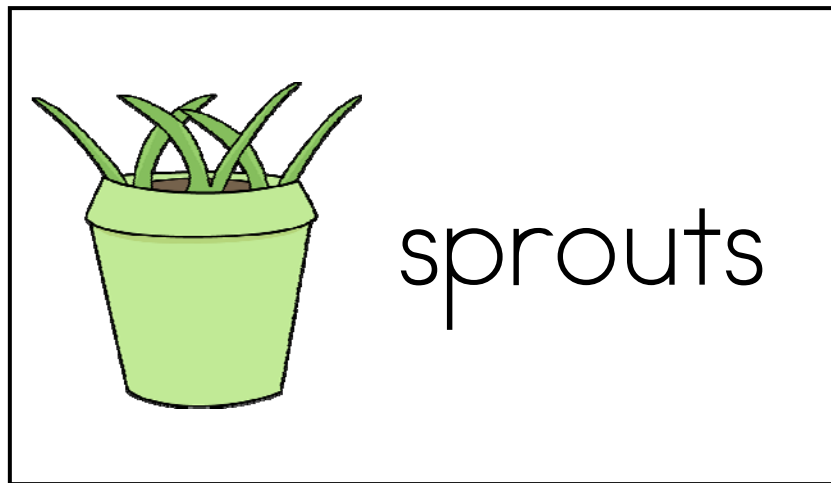
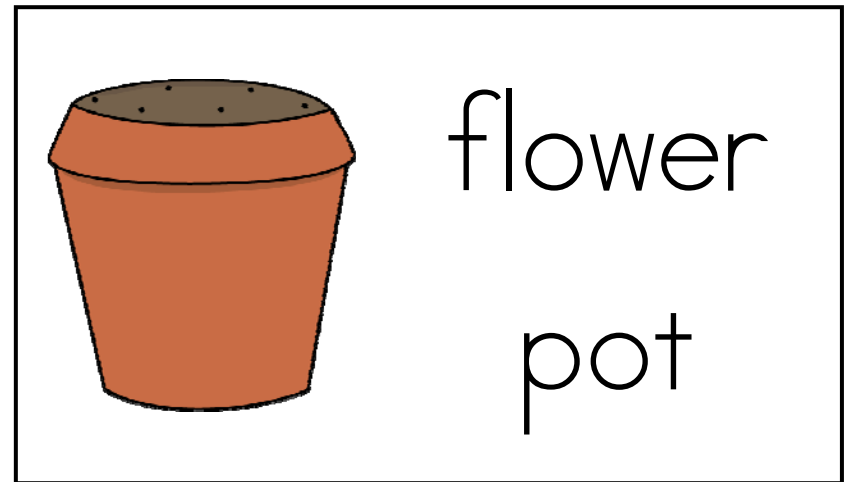
stem

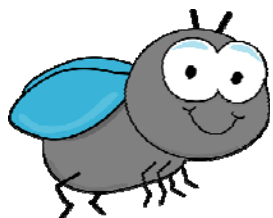
leaf

roots

# may word wall

Cut out the may word wall cards and laminate them. Place them in your circle time area or use them in your writing center.

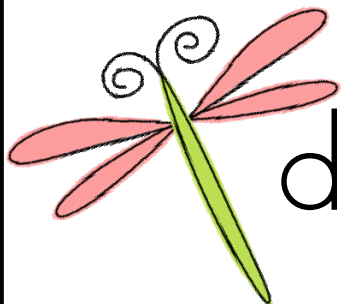




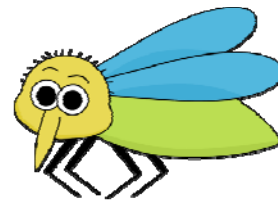
fly



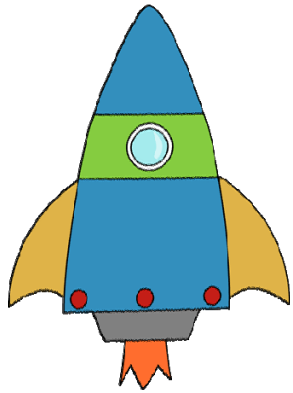
butterfly



dragonfly



mosqui-



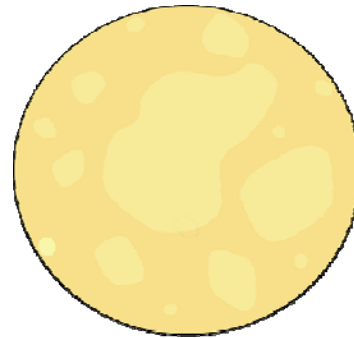
rocket



astronaut



alien



moon

# gardening pre-primer list

Cut out the gardening pre-primer cards, cut them apart and laminate. Use these in your writing center or hang them on your wall for the children to practice reading.



a



and



away



big



blue



can



come



down



find



for



funny



go



help



here



I



in



is



it



jump



little



look



make





me



my



not



one



play



red



run



said



see



the



three



to



two



up



we



where

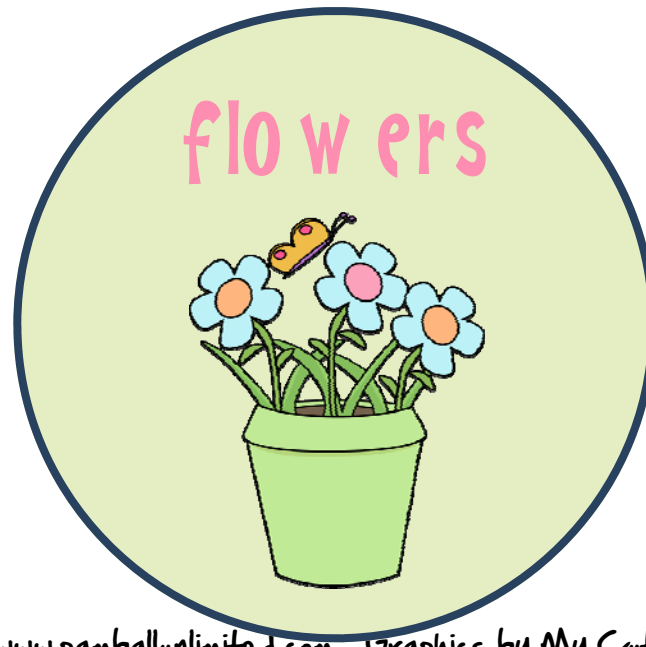
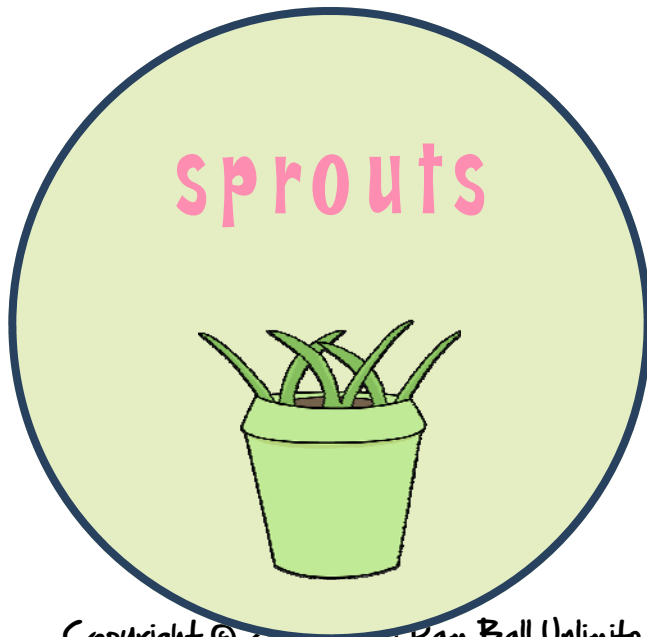
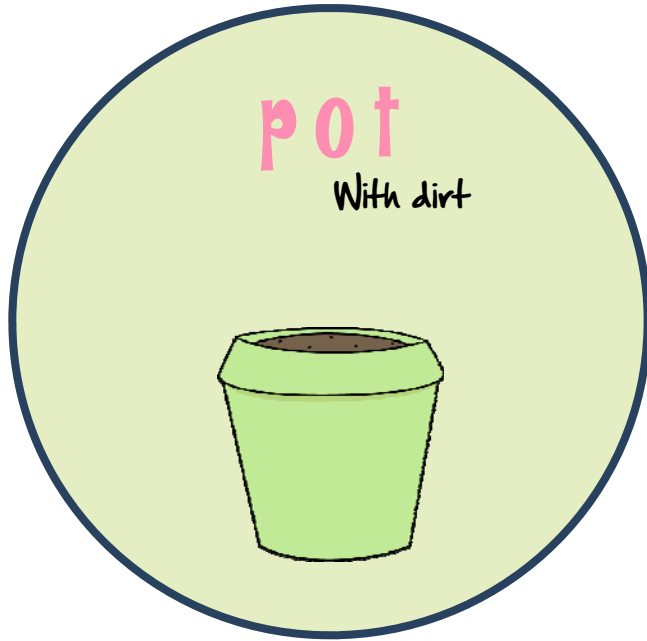


yellow



you

# plant lifecycle sequencing cards

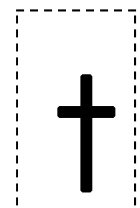
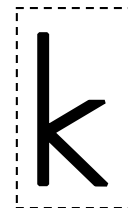
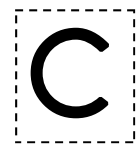
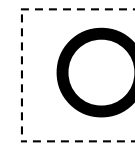
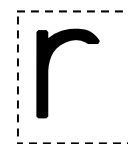
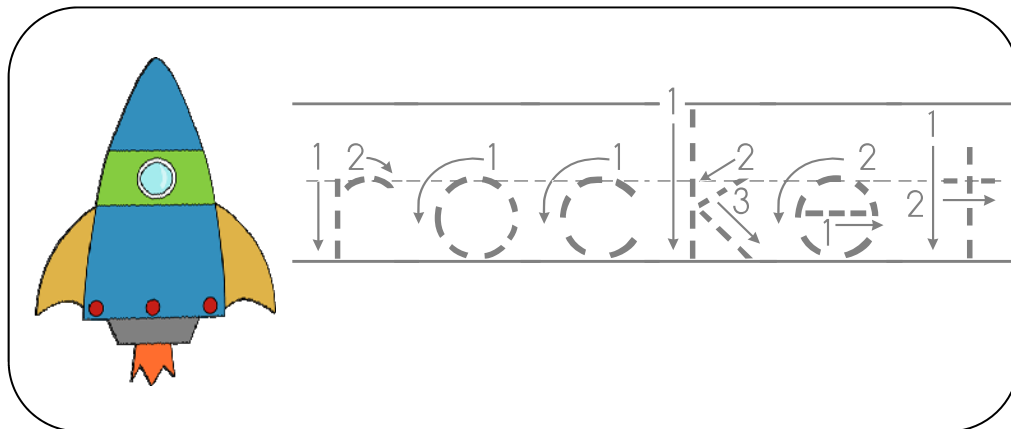
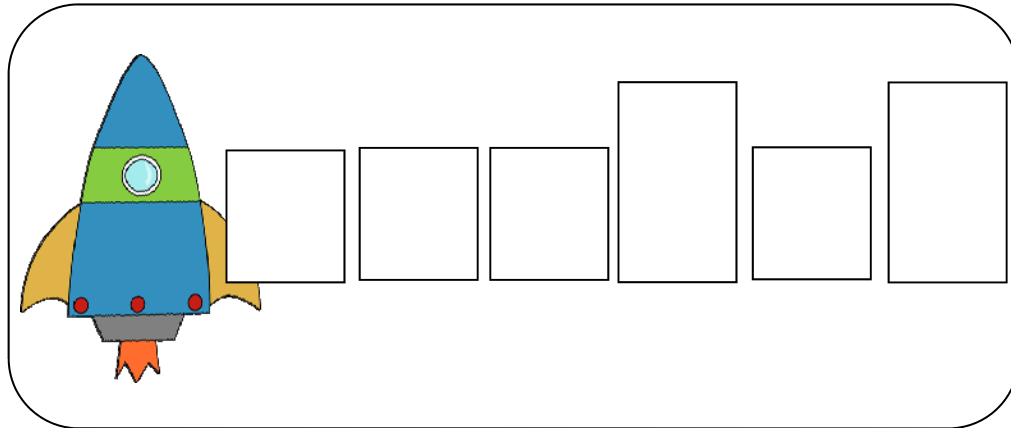


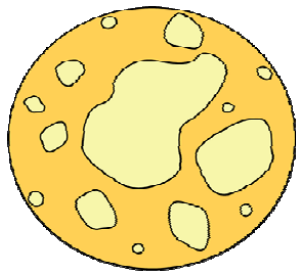
Print the plant lifecycle sequencing cards, cut them apart and laminate for durability.

Place them in your science center for the children to explore! You may want to print more than one so children can work on them together.

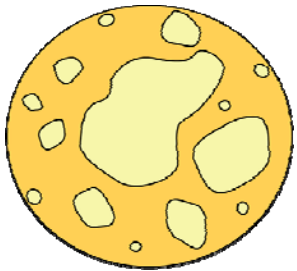
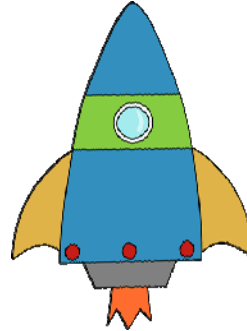
see it say it  
spell it write it

Print the see it, say it, spell it, write it cards. Cut them out and place them in your writing center. Laminate them and provide the children with dry erase markers or crayons for practicing writing. Blank cards are provided for older children to copy the words. (See last page of see it, say it, spell it, write it cards.)

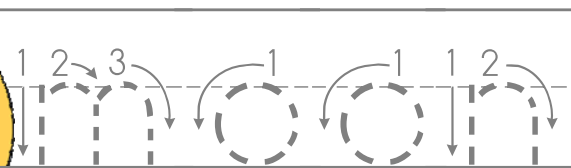
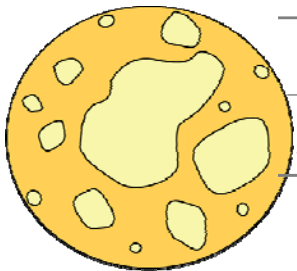
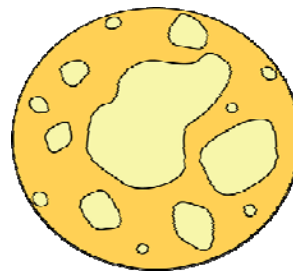




moon



Four empty rectangular boxes for writing the word 'moon'.

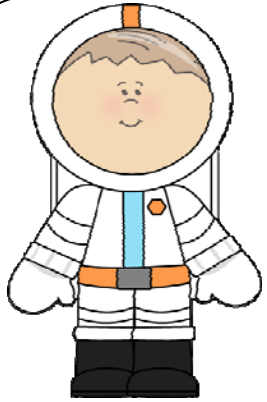


m

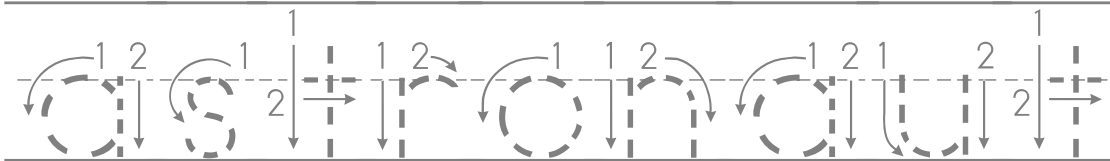
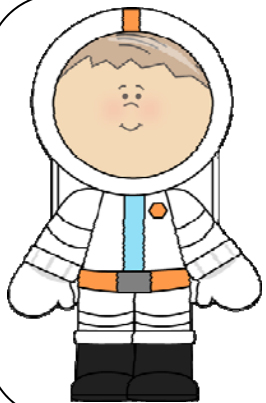
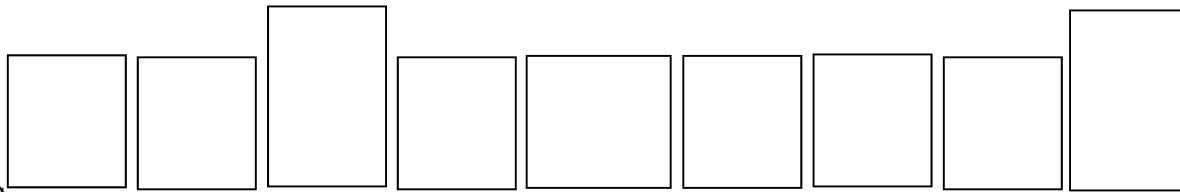
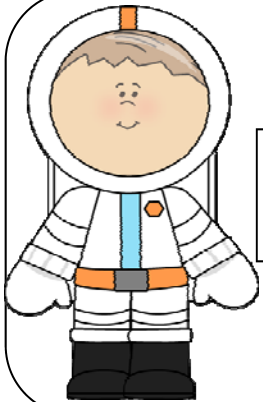
o

o

n



astronaut



a s

t

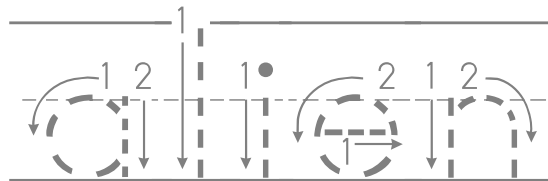
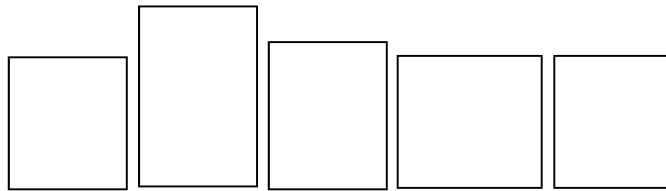
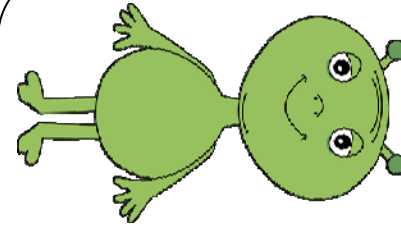
r o

n a

u t

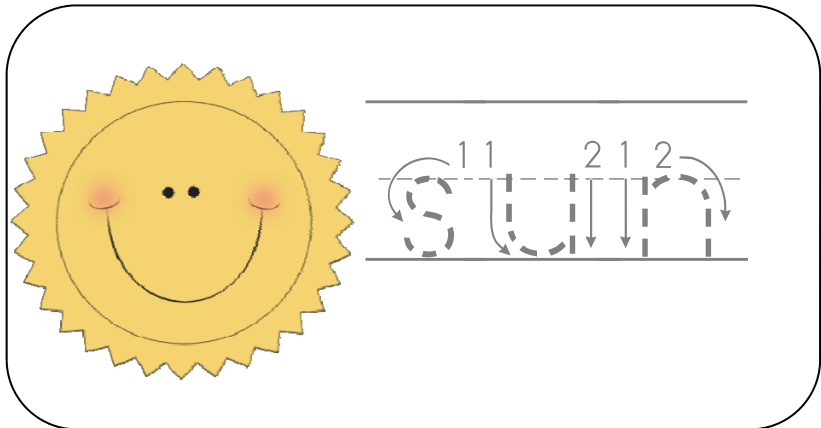
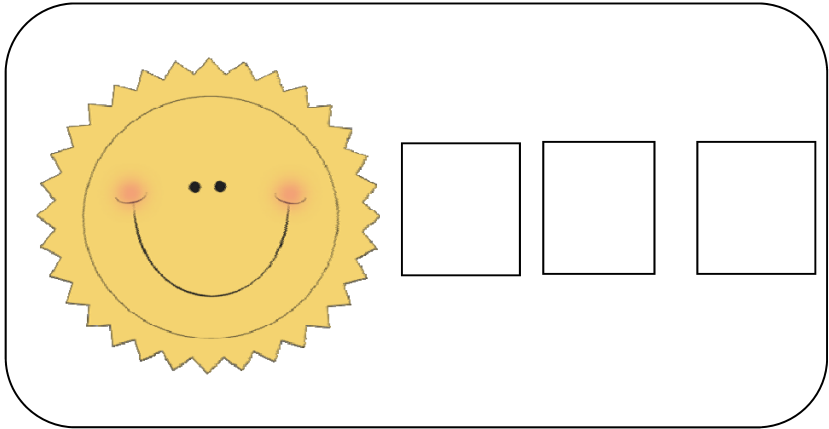
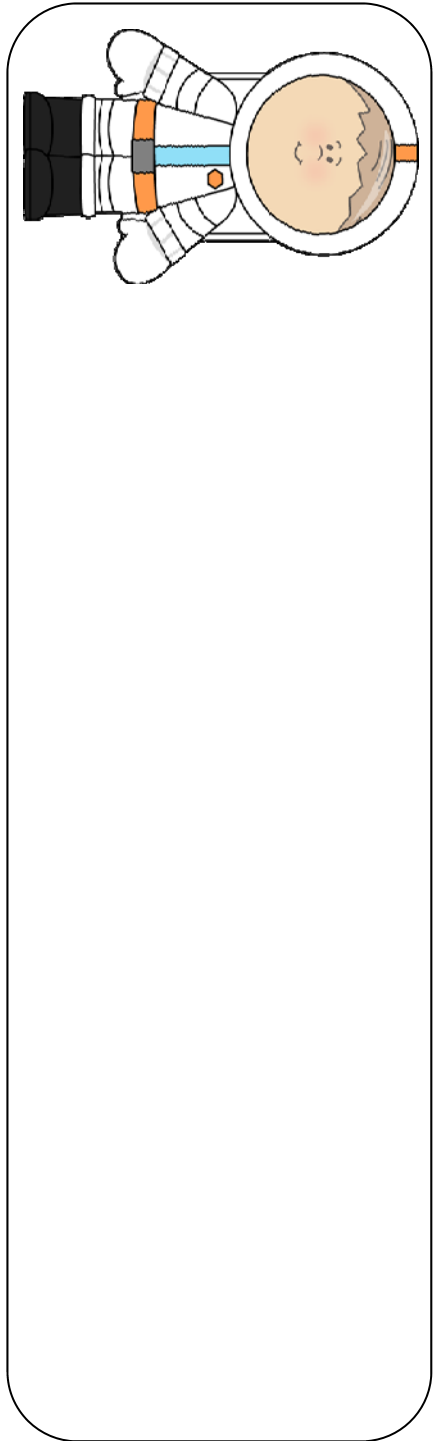
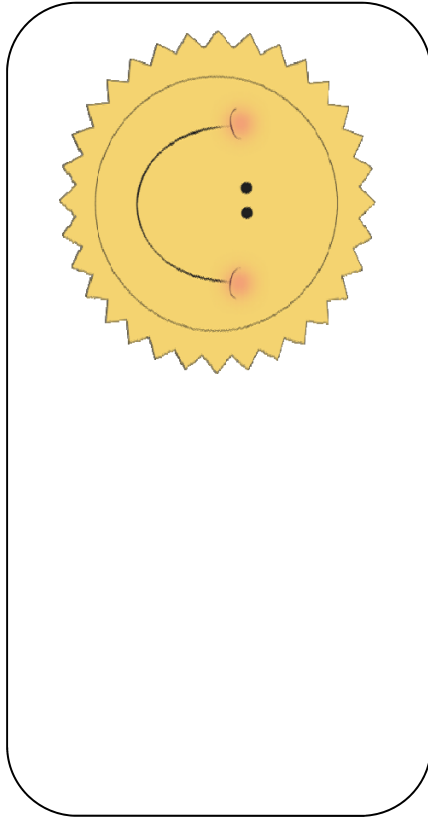


alien



alien







s u n

# mini math mats


Children create simple addition problems using the numbers and dots provided. Below are a few samples of how to use these mats.



Add  
Number  
1

$$\boxed{1} + \boxed{0} = \boxed{1}$$


Add  
Number  
5

$$\boxed{2} + \boxed{3} = \boxed{5}$$


Add  
Number  
6

$$\boxed{2} + \boxed{4} = \boxed{6}$$



Add  
Number  
1

$$\square + \square = \square 1$$



Add  
Number  
2

$$\square + \square = \square 2$$



Add  
Number  
3

$$\square + \square = \square 3$$



Add  
Number  
4

$$\square + \square = \square 4$$



Add  
Number  
5

$$\square + \square = \square 5$$



Add  
Number  
6

$$\square + \square = \square 6$$



Add  
Number  
7

$$\square + \square = 7$$



Add  
Number  
8

$$\square + \square = 8$$



Add  
Number  
9

$$\square + \square = 9$$



Add  
Number  
10

$$\square + \square = 10$$



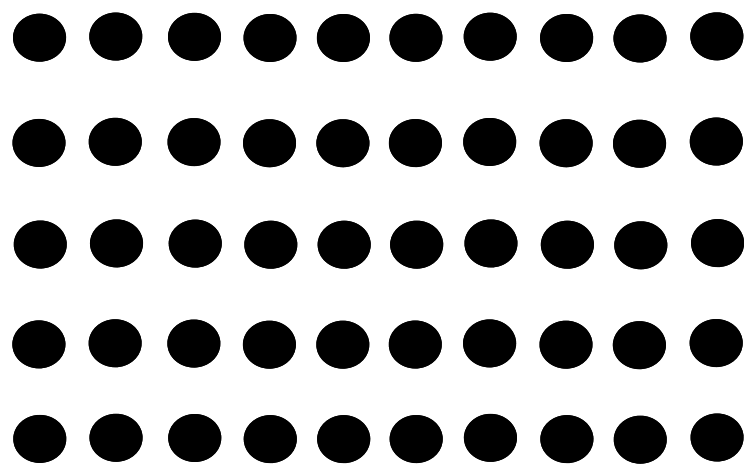
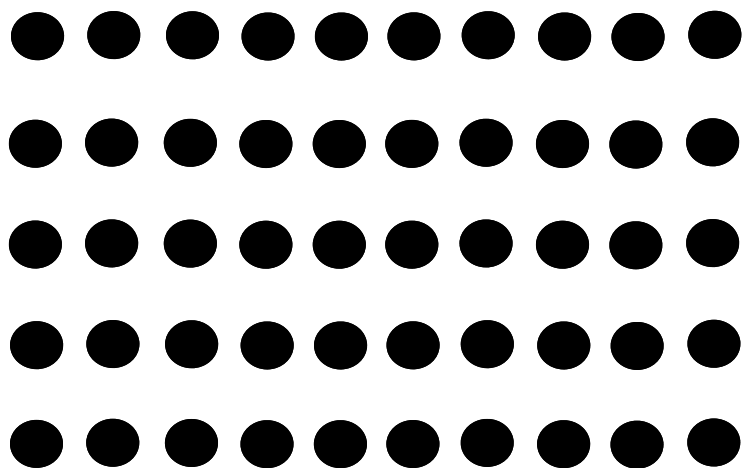
Add  
Number  
11

$$\square + \square = 11$$



Add  
Number  
12

$$\square + \square = 12$$



0	1	2	3	4	5	6	7	8	9	10	11	12
0	1	2	3	4	5	6	7	8	9	10	11	12
0	1	2	3	4	5	6	7	8	9	10	11	12
0	1	2	3	4	5	6	7	8	9	10	11	12
0	1	2	3	4	5	6	7	8	9	10	11	12
0	1	2	3	4	5	6	7	8	9	10	11	12
0	1	2	3	4	5	6	7	8	9	10	11	12



Pam Ball  
unlimited

Copyright © 2013-2016 Pam Ball Unlimited

THANK-YOU FOR DOWNLOADING THIS MONTHLY PACK!!! YOU MAY NOT:

Terms of Use: Files purchased from Pam Ball Unlimited, downloaded from PBU Membership, Child Care Express membership, Lil' Explorers whether purchased or downloaded free are for personal, non-commercial use ONLY.

YOU MAY:

- ♦ Print and use with your own children.
- ♦ Print and use in a classroom or child care setting.
- ♦ Store files on your own hard drive or burn to your own CD-ROM for backup purposes.

- ♦ Share this file with anyone else in any way without permission from Pam.
- ♦ Share this printed file with others without permission from Pam.
- ♦ Store this file on file sharing websites such as GIGATRIBE, 4SHARED, etc.

Like This File?



Join My Facebook Group

facebook

Search Pam Ball Unlimited

Follow Me On



Search Pam Ball Unlimited